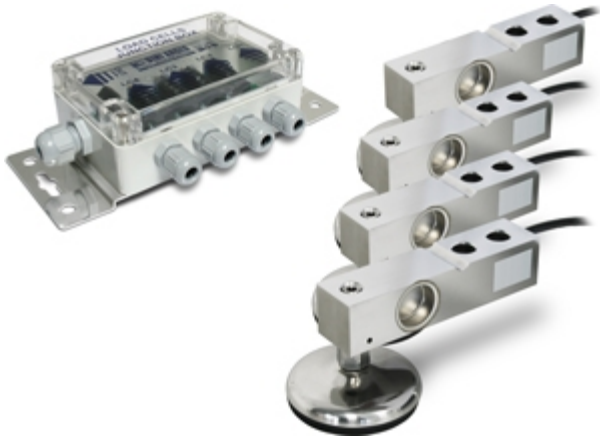


PLK

PLK SERIES' CELL KITS FOR ASSEMBLING FLOOR SCALES



For creating platforms with four load cells of various sizes and capacities suitable for connection to any type of indicator for load cells. The kit is made up of four "SBK" IP68 stainless steel, approved load cells, together with stainless steel adjustable resting feet and an IP67 ABS junction box with 5 cable glands and an internal equalisation board.

Working in cooperation with:

SC DATA SPEED SRL

STR DONATH N. 115/33 - 400331 - JUD. CLUJ
Tel. 0040-264566473 Fax. 0040-364-815440
office@cantare.com.ro

The best solution
for advanced industrial
applications

MAIN FEATURES

- C3 PRECISION CLASS
- STAINLESS STEEL CONSTRUCTION WITH LASER WELDINGS
- IP68 PROTECTION
- MAX. CAPACITIES FROM 300 TO 2000 kg (for each load cell)
- IP67 JUNCTION BOX WITH CORNER EQUALISATION
- 4 HYPERSANITIZABLE STAINLESS STEEL FEET
- OIML CERTIFICATE AVAILABLE UPON REQUEST
- TEST CERTIFICATE AVAILABLE UPON REQUEST

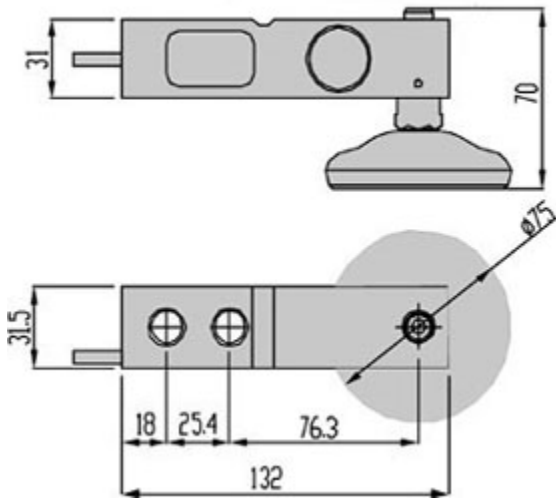
LOAD CELL TECHNICAL FEATURES

- Minimum load cell verification interval: $V_{min} = E_{Max} / 10.000$
- Maximum number of verification intervals: $n_{LC} = 3000$
- Combined error: 0,017% of Full Scale Output (F.S.)
- Full Scale Output: 2mV/V +/- 0.1%
- Temperature effect on zero: 0,0014% /°C
- Temperature effect on full scale output: 0,0014% /°C
- Compensated Temperature Range: -10°C/+40°C
- Operating Temperature Range: -20°C/+60°C
- Creep error after 30 minutes: 0,024% F.S.
- Maximum tolerated excitation voltage: 15 VDC
- Input Resistance: 385 ± 20 Ohm
- Output Resistance: 350 ± 5 Ohm
- Insulation Resistance: >5000 MOhm
- Safe Overload: 150% F.S.
- Ultimate Overload: 200% F.S.
- 6-wire shielded cable, 5m long, 5 mm diameter

EXTRAS AVAILABLE AT TIME OF ORDER

- OIML R60 certificate (without surcharge)
- WELMEC module for approving the system (with surcharge)
- ATEX Certification (with surcharge)

DETAIL 1



Dimensions (mm)

| <u>SBK Wiring Code</u> | |
|------------------------|-----------------|
| <u>Colour</u> | <u>Function</u> |
| -- | SHIELD |
| YELLOW | OUTPUT + |
| GREY | SENSE + |
| BROWN | INPUT + |
| WHITE | OUTPUT - |
| GREEN | INPUT - |
| PINK | SENSE - |



www.diniargeo.com



“YOUR WORLDWIDE PARTNER FOR WEIGHING,”

DINI ARGEO
FRANCE sarl
Nogent-sur-Marne

DINI ARGEO
GMBH
Sinsheim - Germany

DINI ARGEO
UK Ltd
Taunton - United Kingdom

DINI ARGEO WEIGHING
INSTRUMENTS Ltd
Shanghai - China

DINI ARGEO
WEIGHBRIDGES
Calto (RO) – Italy



HEAD OFFICE
Via Della Fisica, 20
41042 Spezzano di Fiorano Modena - Italy



SC DATA SPEED SRL

STR DONATH N. 115/33 - 400331 - JUD. CLUJ

Tel. 0040-264566473 Fax. 0040-364-815440

office@cantare.com.ro

SALES AND TECHNICAL ASSISTANCE SERVICE