




Short description



- Stainless steel IP67 single point load cell
- Bending beam
- Suitable for belt, platform and other electronic weighing devices
- Maximum platform size:
for 50kg-200kg: 400 x 400 mm
for 250kg-500kg: 600 x 800 mm
for 750kg-2t: 1200 x 1200 mm

 test certificate no. TC7867 Revision 0
C of C no R60/2000-NL1-10.31

Available models

Capacity	Accuracy	Full article description
100kg	C3 Excluded from OIML	B6F-C3-100kg-3B6
150kg	C3 Excluded from OIML	B6F-C3-150kg-3B6
200kg	C3 Excluded from OIML	B6F-C3-200kg-3B6
250kg	C3 Excluded from OIML	B6F-C3-250kg-3B6
500kg	C3	B6F-C3-500kg-3B6
750kg	C3	B6F-C3-750kg-3B6
1000kg	C3	B6F-C3-1000kg-3B6
2000kg	C3	B6F-C3-2000kg-3B6

Specifications and dimensions are subject to change without notice and do not constitute any liability whatsoever.

Type B6F Load Cell

Detailed specifications B6F

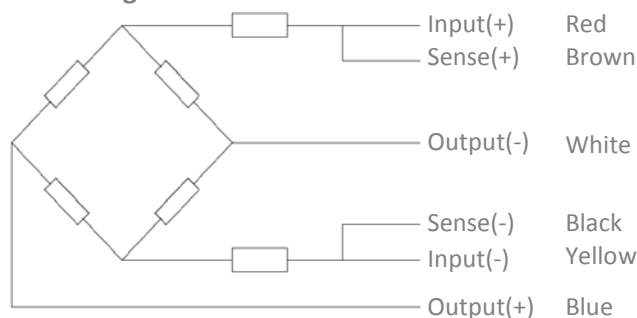
Accuracy class		C3	OIML R60 C3
Output sensitivity (= FS)	mV/V	2.0 ± 0.2	
Maximum capacity (E _{max})	kg	100, 150, 200, 250	500, 750, 1000, 2000
Max.number of load cell intervals	n _{LC}	3000	
Ratio of min. LC verification interval	$Y = E_{max} / v_{min}$	5000	12000
Combined Error	%FS	≤± 0.0230	
Minimum dead load	Of E _{max}	0%	
Safe overload	of E _{max}	150 %	
Ultimate overload	of E _{max}	300 %	
Zero balance	of FS	< ± 1.0 %	
Excitation, recommended voltage	V	5 ~ 12	
Excitation maximum	V	18	
Input resistance	Ω	385 ± 5	
Output resistance	Ω	350 ± 3	
Insulation resistance	MΩ	≥5000 (at 50VDC)	
Compensated temperature	°C	-10 ~ +40	
Operating temperature	°C	-35 ~ +65	
Storage temperature	°C	-40 ~ +70	
Element material		Stainless steel	
Ingress Protection (acc. to EN 60529)		IP67	
Recommended torque on fixation	Nm	M12:75 M16:200	
ATEX classification (optional)		II1G Ex ia II1C T4	II1D Ex iaD 20 T73°C II3G nL IIC T4

Wiring

Wiring:

Shielded, 6 conductor cable.
 Cable diameter: Ø6.2mm
 Standard cable length: 3m
 Shield not connected to element

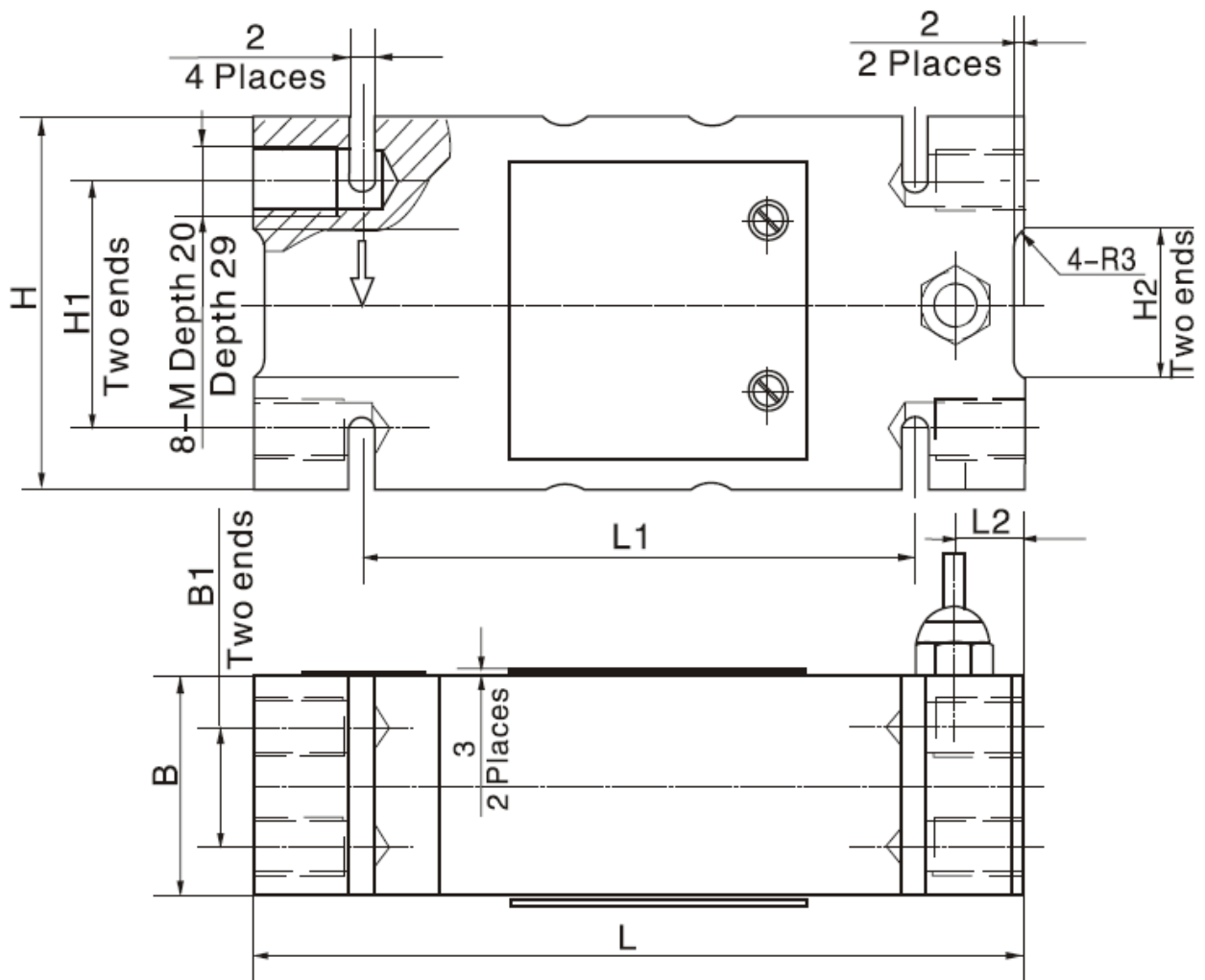
6-wire diagram



Specifications and dimensions are subject to change without notice and do not constitute any liability whatsoever.

Type B6F Load Cell

Dimensions in mm



Dimension Capacity	B	B1	H	H1	H2	L	L1	L2	M
50-200kg	44	24	75	50	30	156	112	14	M12
250-500kg	60	36	95	70	30	146	110	11	M12
750kg-2000kg	76	46	125	95	65	176	110	24	M16

Specifications and dimensions are subject to change without notice and do not constitute any liability whatsoever.

Type B6F Load Cell



Specifications and dimensions are subject to change without notice and do not constitute any liability whatsoever.

Zemic Europe B.V.
Leerlooierstraat 8
4871 EN Etten-Leur
The Netherlands

Nr. 2013.11 B6F Rev3

4/3

T: +31 76 50 39480
F: +31 76 50 39481
info@zemic.nl
www.zemic.nl