

FXC

FXC SERIES BENDING BEAM LOAD CELLS



Bending beam load cells for approved weighing, automatic systems, dosage.

CAPACITIES (kg): 10, 20, 50, 100, 200, 300, 500.

OIML R60. C3 precision class.

Stainless steel. IP68 protection.

Working in cooperation with:

SC DATA SPEED SRL

STR DONATH N. 115/33 - 400331 - JUD. CLUJ
Tel. 0040-264566473 Fax. 0040-364-815440
office@cantare.com.ro

The best solution
for advanced industrial
applications

MAIN FEATURES

- C3 PRECISION CLASS
- STAINLESS STEEL
- IP68 PROTECTION
- MAX. CAPACITIES FROM 10 TO 500 kg
- SHIELDED CONNECTION CABLE
- OIML CERTIFICATE AVAILABLE UPON REQUEST
- TEST CERTIFICATE AVAILABLE UPON REQUEST

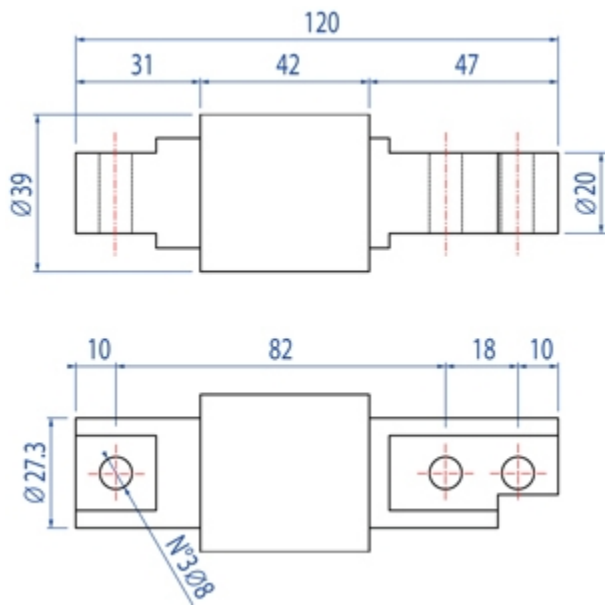
TECHNICAL FEATURES

- Minimum load cell verification interval: $V_{min} = E_{Max} / 10.000$
- Maximum number of verification intervals: $n_{LC} = 3000$
- Full Scale Output: $2mV/V \pm 0,1\%$
- Combined error: 0,017% of Full Scale Output (F.S.)
- Non-Repeatability: 0,015% F.S.
- Temperature effect on zero: $\pm 0,002\% / ^\circ C$
- Temperature effect on full scale output: $\pm 0,0012\% / ^\circ C$
- Compensated Temperature Range: $-10^\circ C / +40^\circ C$
- Operating Temperature Range: $-20^\circ C / +60^\circ C$
- Creep error after 30 minutes $\pm 0,016\%$ F.S.
- Maximum tolerated excitation voltage: 15 VDC
- Input Resistance: $385 \pm 20 \text{ Ohm}$
- Output Resistance: $350 \pm 5 \text{ Ohm}$
- Insulation Resistance: $> 5000 \text{ MOhm}$
- Safe Overload: 200% F.S.
- Ultimate Overload: 300% F.S.
- Nominal displacement: $< 0,4 \text{ mm}$
- 4-wire shielded cable, 3m long, 4mm diameter.

ATEX VERSION

- The CCATEX certificate makes the load cell suitable for use in hazardous areas with protection methods according to:
ATEX II 1G Ex ia IIC T6 (Ta $-20 \div +40^\circ C$) TX (Ta $-20 \div +65^\circ C$) Ga
ATEX II 1D Ex ta IIIC TX $^\circ C$ (Ta $-20 \div +40^\circ C$) TX $^\circ C$ (Ta $-20 \div +65^\circ C$) Da IP65.
The certificate includes the manual and the ATEX CE conformity declaration (available in EN, DE, FR, and IT).
- IMPORTANT: the certificate refers to the single load cell. For systems with more load cells, it is necessary to order one certificate for each load cell.

DETAIL 1








Dimensions (mm)

Wiring Code	
<i>Colour</i>	<i>Function</i>
--	SHIELD
BLACK	OUTPUT +
RED	INPUT +
BLUE	OUTPUT -
WHITE	INPUT -

VERSIONS

Versioni disponibili

Codice	Max (kg)
FXC10 	10
FXC20 	20
FXC50 	50
FXC100 	100
FXC200 	200
FXC300 	300
FXC500 	500



www.diniargeo.com



“YOUR WORLDWIDE PARTNER FOR WEIGHING,”

DINI ARGEO
FRANCE sarl
Nogent-sur-Marne

DINI ARGEO
GMBH
Sinsheim - Germany

DINI ARGEO
UK Ltd
Taunton - United Kingdom

DINI ARGEO WEIGHING
INSTRUMENTS Ltd
Shanghai - China

DINI ARGEO
WEIGHBRIDGES
Calto (RO) – Italy



HEAD OFFICE
Via Della Fisica, 20
41042 Spezzano di Fiorano Modena - Italy



SC DATA SPEED SRL

STR DONATH N. 115/33 - 400331 - JUD. CLUJ

Tel. 0040-264566473 Fax. 0040-364-815440

office@cantare.com.ro

SALES AND TECHNICAL ASSISTANCE SERVICE