

## FXC\_C6

"FXC C6" SERIES: BENDING BEAM LOAD CELLS, C6 CLASS



Bending beam load cells for approved weighing, automatic systems, dosage.

CAPACITIES (kg): 20, 50, 100, 200.

OIML R60. C6 precision class.

Stainless steel. IP68 protection.

Working in cooperation with:

**SC DATA SPEED SRL**

STR DONATH N. 115/33 - 400331 - JUD. CLUJ  
Tel. 0040-264566473 Fax. 0040-364-815440  
office@cantare.com.ro

The best solution  
for advanced industrial  
applications

## MAIN FEATURES

- C6 PRECISION CLASS
- STAINLESS STEEL
- IP68 PROTECTION
- MAX. CAPACITIES FROM 20 TO 200 kg
- SHIELDED CONNECTION CABLE
- OIML CERTIFICATE AVAILABLE UPON REQUEST
- TEST CERTIFICATE AVAILABLE UPON REQUEST

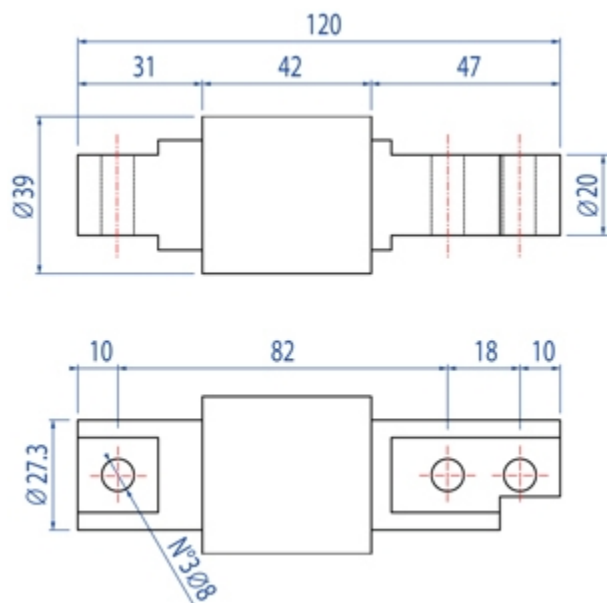
## TECHNICAL FEATURES

- Minimum load cell verification interval:  $V_{min} = E_{Max} / 10.000$
- Maximum number of verification intervals:  $n_{LC} = 6000$
- Full Scale Output:  $2mV/V \pm 0,1\%$
- Combined error: 0,008% of Full Scale Output (F.S.)
- Temperature effect on zero:  $\pm 0,0014\% / ^\circ C$
- Temperature effect on full scale output:  $\pm 0,0007\% / ^\circ C$
- Compensated Temperature Range:  $-10^\circ C / +40^\circ C$
- Operating Temperature Range:  $-20^\circ C / +60^\circ C$
- Creep error after 30 minutes  $\pm 0,012\%$  F.S.
- Maximum tolerated excitation voltage: 15 VDC
- Input Resistance:  $385 \pm 20$  Ohm
- Output Resistance:  $350 \pm 5$  Ohm
- Insulation Resistance:  $> 5000$  MOhm
- Safe Overload: 150% F.S.
- Ultimate Overload: 200% F.S.
- 4-wire shielded cable, 3m long.

## ATEX VERSION

- The CCATEX certificate makes the load cell suitable for use in hazardous areas with protection methods according to:  
ATEX II 1G Ex ia IIC T6 (Ta  $-20 \div +40^\circ C$ ) TX (Ta  $-20 \div +65^\circ C$ ) Ga  
ATEX II 1D Ex ta IIIC TX $^\circ C$  (Ta  $-20 \div +40^\circ C$ ) TX $^\circ C$  (Ta  $-20 \div +65^\circ C$ ) Da IP65.  
The certificate includes the manual and the ATEX CE conformity declaration (available in EN, DE, FR, and IT).
- **IMPORTANT:** the certificate refers to the single load cell. For systems with more load cells, it is necessary to order one certificate for each load cell.

## DETAIL 1



Dimensions (mm)

Wiring Code	
<i>Colour</i>	<i>Function</i>
--	SHIELD
BLACK	INPUT +
YELLOW	OUTPUT +
WHITE	OUTPUT -
GREEN	INPUT -

## VERSIONS

Versioni disponibili

Codice	Max (kg)
FXC20C6	20
FXC50C6	50
FXC100C6	100
FXC200C6	200



www.diniargeo.com



“YOUR WORLDWIDE PARTNER FOR WEIGHING,”

DINI ARGEO  
FRANCE sarl  
Nogent-sur-Marne

DINI ARGEO  
GMBH  
Sinsheim - Germany

DINI ARGEO  
UK Ltd  
Taunton - United Kingdom

DINI ARGEO WEIGHING  
INSTRUMENTS Ltd  
Shanghai - China

DINI ARGEO  
WEIGHBRIDGES  
Calto (RO) – Italy



HEAD OFFICE  
Via Della Fisica, 20  
41042 Spezzano di Fiorano Modena - Italy



**SC DATA SPEED SRL**

STR DONATH N. 115/33 - 400331 - JUD. CLUJ

Tel. 0040-264566473 Fax. 0040-364-815440

office@cantare.com.ro

SALES AND TECHNICAL ASSISTANCE SERVICE