

CP

## CP SERIES LOW PROFILE LOAD CELLS



Stainless steel compression load cells suitable for weighing tanks and hoppers with the relevant accessories.

CAPACITIES (kg): 250, 500, 1000, 2500, 5000, 7500, 10000, 15000, 30000, 50000, 100000.

Stainless steel. IP68 protection. C3 precision class.

Working in cooperation with:

**SC DATA SPEED SRL**

STR DONATH N. 115/33 - 400331 - JUD. CLUJ  
Tel. 0040-264566473 Fax. 0040-364-815440  
office@cantare.com.ro

The best solution  
for advanced industrial  
applications

## MAIN FEATURES

- LOW PROFILE
- STAINLESS STEEL CONSTRUCTION
- IP68 PROTECTION
- MAX. CAPACITIES FROM 250 TO 100000 kg
- SHIELDED CONNECTION CABLE

## TECHNICAL FEATURES

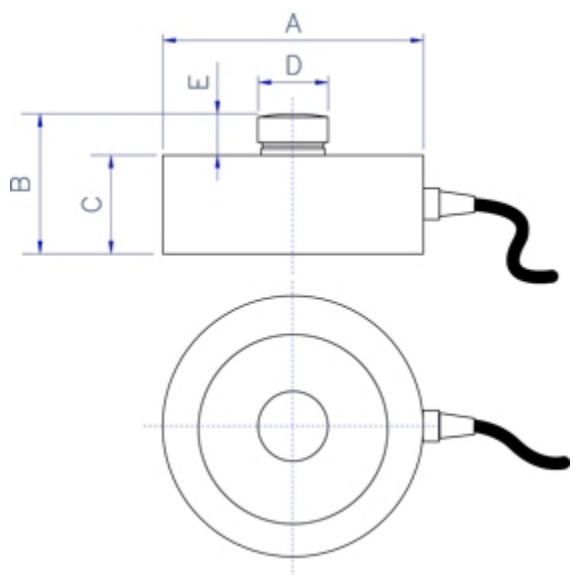
- Full Scale Output: 2mV/V +/- 0,5%
- Non-Repeatability: 0,01% F.S.
- Temperature effect on zero: 0,02% / 10°C
- Temperature effect on full scale output: 0,02% / 10°C
- Compensated Temperature Range: -10°C/+50°C
- Operating Temperature Range: -20°C/+60°C
- Creep error after 30 minutes: 0,02% F.S.
- Recommended excitation voltage: 10 Vdc
- Maximum tolerated excitation voltage: 15 Vdc
- Input Resistance: 750 ± 10 Ohm
- Output Resistance: 700 ± 5 Ohm
- Zero Balance: +/-1% F.S.
- Insulation Resistance: >5000 MOhm
- Safe Overload: 120% F.S.
- 4-wire shielded cable, 5 mm diameter:
  - 5 m long for CP 250...5000 versions;
  - 10 m long for CP 7500...100000 versions.

## ATEX VERSION

- The CCATEX certificate makes the load cell suitable for use in hazardous areas with protection methods according to:  
ATEX II 1G Ex ia IIC T6 (Ta -20÷+40°C) TX (Ta -20÷+65°C) Ga  
ATEX II 1D Ex ta IIIC TX°C (Ta -20÷+40°C) TX°C (Ta -20÷+65°C) Da IP65.  
The certificate includes the manual and the ATEX CE conformity declaration (available in EN, DE, FR, and IT).
- IMPORTANT: the certificate refers to the single load cell. For systems with more load cells, it is necessary to order one certificate for each load cell.

<u>Wiring Code</u>	
<i>Colour</i>	<i>Function</i>
--	SHIELD
GREEN	OUTPUT +
RED	INPUT +
WHITE	OUTPUT -
BLACK	INPUT -

# DETAIL 1



Code	Dimensions in mm				
	A	B	C	D	E
CP250	82	44	32	22	12
CP500	82	44	32	22	12
CP1000	82	44	32	22	12
CP2500	82	44	32	22	12
CP5000	82	44	32	22	12
CP7500	82	44	32	22	12
CP10000	82	44	32	22	12
CP15000	100	48,5	35	28	13,5
CP30000	126	54	40	35	14
CP50000	165	80	60	60	20
CP100000	165	80	60	60	20

## VERSIONS

### Versioni disponibili

Codice	Max (kg)
CP250	250
CP500	500
CP1000	1000
CP2500	2500
CP5000	5000
CP7500	7500
CP10000	10000
CP15000	15000
CP30000	30000
CP50000	50000
CP100000	100000



www.diniargeo.com



“YOUR WORLDWIDE PARTNER FOR WEIGHING,”

DINI ARGEO  
FRANCE sarl  
Nogent-sur-Marne

DINI ARGEO  
GMBH  
Sinsheim - Germany

DINI ARGEO  
UK Ltd  
Taunton - United Kingdom

DINI ARGEO WEIGHING  
INSTRUMENTS Ltd  
Shanghai - China

DINI ARGEO  
WEIGHBRIDGES  
Calto (RO) – Italy



HEAD OFFICE  
Via Della Fisica, 20  
41042 Spezzano di Fiorano Modena - Italy



**SC DATA SPEED SRL**

STR DONATH N. 115/33 - 400331 - JUD. CLUJ

Tel. 0040-264566473 Fax. 0040-364-815440

office@cantare.com.ro

SALES AND TECHNICAL ASSISTANCE SERVICE